



Elizabeth Fry Society
of Calgary

2016 ANNUAL REPORT

A YEAR OF SECOND CHANCES



The common and humble dandelion is a symbol of resiliency. It survives through the toughest conditions, blooms heartily and thrives, symbolizing the everlasting ability to rise above one's challenges.

RIISING TO THE CHALLENGE

Message from our Board President

Calgary's tough economy was a challenge in 2016 and we felt its impact. Three of our Board directors were forced to search for new jobs, funders tried to do more with less and the people we serve persevered with less money, less opportunity and frankly, less of everything.

The Elizabeth Fry Society of Calgary (EFry) responded to these challenges through the strength of the individuals we serve, our funders, volunteers, partnerships in the community, staff, management team and the Board. I'm proud to work with such a strong community of supporters whose hard work and dedication stands out when budgets are stretched, support is needed more than ever and life in general is harder for everyone.

This year's annual report is about second chances, which is a fitting theme because second chances is what our work is all about. The Board continues to support EFry's work through strategy, governance, funding diversification and guidance drawing on a significant scope of skills and expertise.

When we announce this year's slate, you will see that the Board development committee has done a great job bringing on individuals with skills that are aligned to support and nurture EFry's strategic direction and continued growth in challenging times.

Change remains a constant and after over a decade of service, we are saying good-bye to Vice President Brett Pearce. Brett is a key contributor to EFry's success and a tireless champion for our work. His passion, dedication and friendship are an inspiration to me and other Board members. Now that his term is done, we will miss his humour, work ethic, mad project management skills, intellect and support. Thank you, Brett!

Sincerely,



Virginia Ashley
Board President

2016 BOARD OF DIRECTORS

Virginia Ashley	President
Brett Pearce	Vice President
Carlos Garcia	Treasurer
Kate Baxter	Secretary

Lisa Rothwell	Director
Supreet Sidhu	Director
Jessica Karpat	Director



SECOND CHANCES HEAL COMMUNITIES

Message from our Executive Director

Statistics tell a story. When it comes to weighing the costs for incarceration against time in community, there is a powerful case to be made.

Since 1998, the crime rate in Canada has decreased but the costs of federal corrections have increased by approximately one billion dollars since 2005. Over the same time period, provincial and territorial expenditures have also increased by 2.21 billion dollars. **Today, the federal costs associated with incarcerating one woman annually is \$213,000 but to maintain an offender in the community costs only \$33,067.**

Given these statistics, it's clear that the cost of incarceration continues to climb despite the decreasing crime rate. Incarceration also has minimal benefits in asserting positive change for individuals upon release. Negative consequences associated with incarceration include the burden of separating families, post-traumatic stress disorder and diminished potential for self-sufficiency upon release. This especially impacts individuals' ability to gain employment and stable housing.

Throughout 2016, EFry focused on providing second chances. Women accessing our services were able to secure supports that contributed to their growth and potential to make positive changes. Through the consistency of strong working relationships, EFry provides a safe space for women to build their personal resiliency to overcome their mistakes without judgment.

Giving women a second chance is not only a positive step towards healing families and communities, but reduces the financial burden of incarceration. It also eliminates the domino effect that occurs when women leave their children behind to do their time. EFry's staff work within an integrative model that allows women and their families to access services at their level of readiness, resulting in stronger relationships and personal success.

Last year, EFry focused on addressing client needs from a place of healing and wellness to support women while they regain ties to their families and community. We saw several successes, especially with women who previously cycled in and out of the justice and prison systems. Today, these women have moved into stable housing and environments of personal wellness.

It is human to make mistakes. Having a community of care makes a significant difference when encouraging healing and wellness. Thank you to our community of supporters for donating your time, resources and talents to support EFry's work. Through consistency of strong working relationships, EFry provides a safe space without judgement for women to build their personal resiliency to overcome their mistakes.

Sincerely,



Katelyn Lucas
Executive Director





INSIDE THIS REPORT

- 2 Message from our Board President
- 3 Message from our Executive Director
- 5 Year in Review
- 8 Program Highlights
- 14 Client Profile - Nicole's Story
- 15 General Highlights
- 16 Program Stats
- 18 Thank You Director Brett Pearce
- 19 A Year in Pictures
- 20 Thanks and Recognition
- 23 Looking Forward

YEAR IN REVIEW

50th Anniversary

EFry turned 50 on December 13, 2015 and we began a year-long celebration throughout 2016 filled with extraordinary experiences. We built awareness about EFry, our work and the positive impact we are making in the lives of women, youth and their families.

From EFry's largest fundraiser in its 50-year history featuring Piper Kerman, to community engagement and awareness events such as Doors Open YYC, to the filming of a new promotional video and the launch of our new website, our 50th year was about celebrating 50 years of second chances.

We all have a role to play in helping women and their families find another chance. Working together, we break the cycle of poverty and continue to honour the work of Elizabeth Fry, a prison reform advocate in the early 1800s and our namesake.



The Society used to visit women in prisons and have tea with them which was offered in ceramic teacups and saucers.



YEAR IN REVIEW

Piper Kerman

On April 14, 2016, we proudly presented “The View from Behind Bars – an Evening with Piper Kerman” at the Telus Convention Centre. The best-selling author and inspiration behind the Netflix smash hit ***Orange is the New Black*** shared her personal story of incarceration with over 600 Calgarians in attendance. More importantly, she inspired people to think about how they can help women leaving incarceration by offering employment, housing and acceptance into our community.



A highlight of the evening included Piper's private dinner with several women of lived experience, who shared their personal stories. Thanks to the generosity of many local businesses and individuals, our silent auction featured experiences (including a trip to Alcatraz in San Francisco), original art, spa certificates, event tickets and more. Despite the challenging economy, we raised thousands of dollars for our prison-to-community support program. We also increased awareness about the unique issues facing women who are leaving prison through numerous media interviews and our event hashtag, #PiperinYYC, which was trending on Twitter that night.

It was a night that honoured the power of second chances and as Piper so eloquently said,

**“WE SHOULDN'T BE JUDGED
BY OUR WORST DAY, BUT OUR
BEST DAY. AND THE BEST
THINGS WE'RE CAPABLE OF.”**

We sincerely appreciate our sponsors, donors, volunteers, staff and everyone who made this event a tremendous success. Thank you to our corporate event sponsors: CTV Calgary, Corus Entertainment, Bow Valley College, Athabasca University, Display Graphics, Landstar Communities, Krywolf Insurance, Mosaic Communications, Quantum Place and the United Way of Calgary and Area.



Doors Open YYC

On September 23, 2016, we opened our doors to the public as part of Doors Open YYC, when many of Calgary's most intriguing and beloved sites from all quadrants of the city host special revealing tours and behind-the-scenes experiences. Calgarians were invited to visit the EFry office and we rolled out the "orange" carpet to give our guests the VIP treatment.

Activities included mug shots, EFry Jeopardy, Blackfoot storytelling and a special panel of women of lived experience who shared their personal stories of incarceration. A look into our historical archives offered a glimpse into how the criminal justice system has changed and how we have evolved to address the changing justice-related issues.

Most importantly, we discussed our unique role in Calgary and our commitment to helping women and their families find another chance with their lives.





OUR PROGRAMS

OUR PROGRAMS HELP WOMEN BREAK THE CYCLE OF POVERTY AND START AGAIN. CRIMES OF POVERTY ARE COMMON FOR THE MAJORITY OF WOMEN WE SERVE AND ABOUT 80 PER CENT OF OUR CLIENTS ARE MOTHERS. TO HELP THEM FIND ANOTHER CHANCE TO REBUILD THEIR LIVES, THEY NEED PRACTICAL HELP AND ACCESS TO COMMUNITY RESOURCES.

PROGRAM HIGHLIGHTS

IMMIGRATION

CAPI

Community Awareness Program for Immigrants

Community Awareness Program for Immigrants (CAPI) breaks down the barriers faced by immigrant women and helps them to successfully integrate into the community. Through a series of free clinics and workshops, Canadian newcomers become aware of their rights and responsibilities within the Canadian legal system.

In 2016, our individualized work with newcomers focused on the reunification of family and integration into the local community. Several women saw their family sponsorship applications accepted, which is indicative of the new Liberal federal government's commitment to ensuring immigrants in Canada can reunite or remain connected to their families through supportive immigration processes.

We are thankful for our strong partnerships with Chinook Learning Services, Calgary Immigrant Education Society, the Welcome Centre for New Immigrants, The Women's Centre and the YWCA.

Highlights include:

69 NEW INDIVIDUAL
CLIENTS SERVED
2044 PEOPLE
ATTENDED
WORKSHOPS
82 WORKSHOPS
CONDUCTED

sage



GROUP PROGRAMMING

Emotional Wellness and Employment Readiness

Our 12-week SAGE program provides an Indigenous cultural foundation that supports vulnerable women through interactive and experiential learning processes, expressive writing and photography. We prepare women with skills to help develop the next steps towards their education, employment or training.

Highlights include:

- ✧ 15 GRADUATES WITH 32 PARTICIPANTS OVERALL
- ✧ ALL GRADUATES FOUND TEMPORARY OR PERMANENT HOUSING
- ✧ ALL WOMEN JOB SHADOWED TO DISCOVER NEW EMPLOYMENT OPTIONS AND PRACTICE NEW SKILLS
- ✧ ONE SAGE GRADUATE IS EXPLORING ENTREPRENEURIAL AVENUES TO SELL HER BEADING AND CRAFTWORK
- ✧ THE SAGE WOMEN ARE SEEKING VOLUNTEER OPPORTUNITIES (IF THEY ARE UNABLE TO FIND EMPLOYMENT) TO KEEP BUSY AND IMPROVE UPON THEIR RESUMES AND SKILLS

GROUP PROGRAMING

U.N.L.O.C.K.

Unlocking New Levels of Capability & Knowledge

EFry provides weekly, ongoing functional skills programs in Calgary Remand Centre to support women in their interpersonal relationships, build self-awareness and strengthen skill-sets to manage emotional behaviour. We also assist women leaving Remand and women on probation.

COURTS

ADULT COURT

We help men and women attending first and second appearances in criminal court and the Case Management Office (CMO). Individuals attending court without a lawyer are assisted in preparing for their court appearance through legal information. We also assist with filling out appropriate forms for disclosure and alternative measures applications. We provide resources and referrals to legal and community supports in Calgary. Individuals attending court without a lawyer are assisted in preparing for their court appearance through legal information.



YOUTH COURT

Calgary Youth Court provides support to youth involved in the criminal justice system who are attending first and second appearances. They receive help navigating the system and understanding court processes and protocols. Vulnerable youth and those without natural or professional supports receive further assistance to assist them with their charges and understanding their court orders. Out of Custody Indigenous youth make up the majority of charges associated with the Administration of Justice (failure to comply, failure to appear, and warrants).

Highlights include:

- The number of youth attending court has continued to decrease annually based on the Youth Criminal Justice Act implemented in 2003
- Immigrant youth have a higher number of charges, less familial supports, and tend to have more severe charges at younger ages



PROGRAM HIGHLIGHTS

FAMILY JUSTICE SERVICES

EFry supported the Family Justice Services floor from May 2012 – December 2016, now known as Resolution Services. Alberta Justice and Solicitor General (AJSG) merged Family Justice Services and the Law Information Centre in the Calgary Courts Centre, increasing their capacity internally and reducing the need for assistance on the floor.

Throughout our years on the Family Justice Services floor, we assisted individuals regarding family justice matters. We helped individuals navigate complex systems, provided information on processes and procedures and provided resources and referrals. In addition, individual support was given to clients with barriers to provide more in depth support around their Family Law situations. We continue to support Resolution services with individualized client assistance in our Adult Legal Advocacy Program.

REGIONAL COURTS

Similar to Calgary Adult and Youth Courts, Regional Court Programs provide assistance to populations in areas surrounding Calgary. In 2016, the court program ran in Airdrie, Canmore, Cochrane, Didsbury, and Okotoks. Although smaller numbers of individuals attend court in the rural areas, EFry Regional Court Advocates provide direct client supports that are relational and contribute to the collaborative spirit of working partnerships in regional court.

OUR REGIONAL COURT TEAM MET WITH AND PROVIDED LEGAL ADVOCACY FOR WOMEN FLEEING DOMESTIC VIOLENCE BY MEETING WITH THEM DIRECTLY IN THE SHELTERS AND IN THE COMMUNITY LOCATED IN RURAL AREAS. EFry ADVOCATES CONTINUE TO BRIDGE THE GAP IN AREAS SUCH AS ACCESS TO SERVICES.

TRAFFIC AND BYLAW COURT

In response to growing numbers of individuals attending Traffic Court in 2016, EFry began to provide services on the Traffic Court Floor. EFry assists with the triage of services and provides information on processes and options. In addition, we offer resources to individuals regarding their traffic and bylaw matters to prevent administration of justice charges.

- AJSG were able to reduce the number of abusive incidents on Alberta Public Servant employees based on EFry's support on the floor.
- Number of individuals attending Traffic and Bylaw increased dramatically in 2016 due to the economic downturn, more individuals sought increased time to pay or challenged ticket reductions..
- Line ups for Traffic and Bylaw court typically are 1.5-2 hours long.

LEGAL ADVOCACY PROGRAMS

LEGAL ADVOCACY

The Legal Advocacy Program helps women and their families address legal matters through information, documental support, resources and assistance. Individualized supports typically are based on referrals from the community, AJSG, and EFry. Women who fit between the liminal gap of paid and subsidized services are our primary focus.

Regional Court Legal Advocacy Programs provide similar services to the Calgary Adult Legal Advocacy Program to rural and surrounding areas.

INDIGENOUS CULTURAL SUPPORTS

EFry understands the importance of culturally relevant and supportive programming which comes from an Indigenous worldview (natural law). Access to culture is essential to building cultural identity and supporting well-being. Both Indigenous and Non-Indigenous women benefit from this path to healing. Indigenous programming was implemented into the Calgary Remand Centre in 2016.

- EFry continues to support the development of Indigenous language through our basic Blackfoot classes
- Women have regularly attended ceremony to benefit their healing
- Women have regularly attended cultural activities to gain knowledge and cultural identity

YOUTH LEGAL ADVOCACY AND MENTORSHIP PROGRAM

Youth who require more assistance with their legal matters based on vulnerabilities that lack natural or professional resources are assisted with direct client support to help them address their court orders and mandatory appointments. Additionally, EFry assists with necessary resources to focus on the core issues, and work collaboratively with the family to build their internal capacity. Mentorship is provided by staff and volunteers who build relationships and assist youth with successful connections to complete their court orders. We also engage youth in alternative activities that promote their wellbeing and help to prevent further recidivism.

Highlights Include:

- ✧ YOUTH SERVED IN 2016 WERE YOUNGER THAN ANTICIPATED – MOSTLY BETWEEN 12-15
- ✧ YOUTH WERE PREDOMINANTLY OF IMMIGRANT AND INDIGENOUS BACKGROUNDS
- ✧ YOUTH INVOLVED EXPERIENCED MENTAL HEALTH ISSUES, ADDICTION, FAMILY BREAKDOWN, AND DOMESTIC VIOLENCE
- ✧ MANY PARENTS WERE INVOLVED, BUT LACKED SKILLS TO SUPPORT THEIR YOUTH APPROPRIATELY

PROGRAM HIGHLIGHTS

PRISON COMMUNITY OUTREACH CASE MANAGEMENT

PCOP

The Prison Community Outreach Program works on a continuum of services offering women supports at any level of readiness. Women may access basic needs services and system navigation for referrals, short term assistance and intensified case management to meet their level of need. The PCOP case management team focuses on healing and wellness as a priority, with a focus on positive interpersonal relationships that enhance personal paths of healing. Women are supported to prevent incarceration, during their incarceration and post incarceration.

Highlights Include:

- In 2016, more women were remanded and incarcerated, reflecting the 29.4% increase in crime in Calgary in 2015. This is the first increase in 11 years and institutions are over-capacity.



CLIENT PROFILE

Nicole's story

Nicole is a client of EFry, accessing our programs both within prison and out. In Calgary Remand, she was given the opportunity to participate in the Drug Treatment Court Program while she was pregnant with her daughter, Chloe. Working with EFry, Nicole submitted treatment applications, got set up for housing and followed through with the resources included in her release planning.

Since being released in May 2016, she attends weekly meetings and the continuing care program at a treatment centre. Thinking about her future, Nicole would like to become a Peer Support Worker because, "I want to be an example of someone who has changed her life and can now help others."

"I won't be a deadbeat mom," said Nicole. "If I go back out and use, I would go back to jail. That's not where I want to live my life."



“EFRY DOESN'T JUDGE. THEY ARE THERE TO SUPPORT YOU AND WANT TO SEE YOU CHANGE. THEY ARE THERE TO HELP YOU. FOR PEOPLE TO SEE THE CHANGE IN ME – AND FOR ME TO SEE HOW LIFE IS NOW COMPARED TO A YEAR AGO – IT'S A BIG CHANGE. I HAVE EVEN HAD MEMBERS OF CALGARY POLICE SERVICE STOP ME TO CONGRATULATE ME ON HOW I'VE TURNED MY LIFE AROUND!”

GENERAL HIGHLIGHTS

Our programs change lives. In 2016 we had several success stories of women who overcame obstacles to make significant life changes. EFry programming and case management supports are essential to supporting women towards the path of healing.

In addition to the individual program highlights in this report, we also accomplished the following in 2016:

- **Saw a greater number of women engage in intensified case management and helped them secure housing and employment**
- **Enhanced Indigenous supports to include cultural programming in Remand**
- **Increased number of preventative workshops by almost double for newcomers**
- **Adapted structures of all court programs to enhance direct client supports**
- **Provided individualized services to women in the rural court areas**
- **Adapted volunteer recruitment and training processes to increase retention**

Second chances are always possible and do make a difference for women making their way out of the justice system.

EVALUATION AND RESEARCH

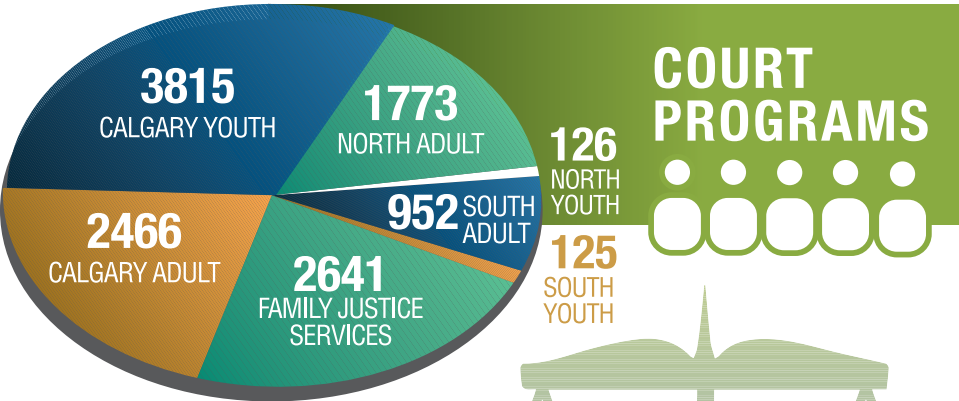
This year, we increased our internal research capacity through improved evaluation and statistical collection to leverage our information to stakeholders. Although funders are an imperative recipient of our outcomes, our statistics tell an important story that should be shared to others. EFry has partnered with community initiatives to leverage the issues for women, youth, Indigenous and vulnerable populations with evidence based research.

In 2016, we collaborated with the Aboriginal Standing Committee on Housing and Homelessness to conduct a Managed Alcohol Program Literature Review and are currently working collaboratively on a NIMBYism research project with the Committee and the University of Lethbridge. In addition, we have continued to work on a bylaw project in partnership with Athabasca University and the Justice Constellation through Vibrant Communities Calgary.

PROGRAM STATS



Prison Community OUTREACH PROGRAM



Legal Information Court Programs





REGIONAL LEGAL INFORMATION NORTH 56 | SOUTH 100

**83 CAPI
workshops**


GROUP PARTICIPANTS

89 VOLUNTEERS

 **sage 32 PARTICIPANTS**



Thank You Director Brett Pearce

It is with honor that we recognize the multiple contributions of Brett Pearce over the past 11 years in his role as a Board Director. Brett has been a part of important transformations of our agency, including EFry's transition from an operational board to the current governance model.

Over the years, Brett has held many different roles including Board Secretary, Chairs of various committees and more recently, he was our Vice President. He was responsible for the development of the Finance and Board Development committees. In all these roles, Brett enhanced committee and Board processes, including the recruitment and on-boarding of new Board members.

For a number of years, Brett was the Board Treasurer and during this time, he developed financial policies and implemented Board structures to ensure the financial health of the agency.

Brett's technical expertise has been essential to helping EFry in modernizing its infrastructure by updating ancient computer and telephone systems. Additionally, Brett built out the agency's Box environment and updated Board policies to included electronic voting.

Brett's passion for the agency has been evident in his lengthy commitment, his multiple contributions, and his overall encouragement in the growth and sustainability of the agency. Throughout his years, Brett supported the agency through the good times and made the tough times more palatable with his humour and positivity. He has made a tremendous impact in many areas and will be missed!

On behalf of the agency and the Board of Directors past and present, we would like to thank Brett for all his hard work and dedication to the Elizabeth Fry Society of Calgary.

**“Do small things
with great love.”**

— Mother Theresa





A YEAR IN PICTURES



THANKS AND RECOGNITION

OUR VOLUNTEERS AND STAFF ARE THE **HEART OF OUR ORGANIZATION** AND HELP US TO STRETCH OUR RESOURCES AND **EXTEND OUR IMPACT**. THANK YOU TO ALL OUR VOLUNTEERS WHO CONTRIBUTE IN SO MANY DIFFERENT WAYS!

2016 VOLUNTEERS

Agnes Nestor
Alex Court
Alisha Dhanjal
Amber Chan
Amy Hiebert
Arfa Saeed
Ashley Keller
Auska Adhikari
Brian Or
Callie Taylor
Carmen Leong
Cathleen McFarland
Charlene Brusa
Claire Gjertsen
Deborah Awojuola
Diana Adu-Gyimah
Elizabeth MacDougall
Elizabeth Murray
Emily Couto
Emily Lacy-Lyle
Farah Waissi
Gina Joves

Guillermo Jimenez
Hannah Maleski
Harjot Dhillon
Hasnat Hanif
Hayden McBennett
Hope Sommerville
Ivana Dokic
Jaime Ballesteros Lara
Janelle Qualie
Jasmin Smith
Jay Gill
Jennifer George
Kale Vizor
Karen Aninakwa
Karen Ranni
Kelly Dunham
Kelsey Richard
Kismet Kaur
Kristen Redekopp
Llyanna Saldonido
Lori Dunsmore
Loveneet Brar

Lyndsay Allen
Maria Habib
Mariya Hoque
Mary Ann Go
Mary Odiase
Mayer Javed
Melissa Chow
Michelle Mak
Miranda Sharpe
Monica Odonchimeg
Nadine Goldade
Natalia Montanez
Natasha Dubyk
Natasha Sunderji
Navdeep Vining
Paulina Ayimaa
Preet Dhillon
Qimat Zafar
Rawan Al-Baldawi
Risquat Morakinyo
Ryan Dormer
Sakshi Singh

Samantha Fulford
Sandra Ilic
Sarah Offredi
Serena Eshaghurshan
Shaela Jalava
Shan Ye
Shimon Sherrington
Shinya Hamed
Sienna Holden
Sonali Sharma
Souad Talbi
Stanislava Zgurova
Sylvia Awad
Talvir Minhas
Tania Kamran
Tara Bracanovic
Taylor Sakon
Tia Mark
Vasil Dimitrov
William Musani
Xingyan (Iris) Li
Yaneth Rodriguez

COMMITTEE WORK

Aboriginal Standing Committee on Housing and Homelessness
 Calgary Court Meetings
 Calgary Homeless Foundation –
 Coordinated Access and Assessment – High Acuity Table
 Calgary Learns Indigenous Advisory Council
 City Wide Case Management
 Employment Committee Information
 Indigenous Justice Community Table
 Housing Partnering Strategy Designated Funds
 Community Advisory Board
 Identity Based Wrap Around Intervention
 Indigenous Gathering Place
 LGBTQ Advisory Group
 National Managed Alcohol Program (MAP) Research
 Recovery Services Task Force
 UWAY Natoo'si
 Vibrant Communities Calgary – Justice Constellation

FUNDERS



PARTNERSHIPS AND COLLABORATIONS

Aboriginal Friendship Centre Calgary
 Alberta Coalition Against
 Human Trafficking (ACT)
 Alberta Health Services Addiction Services
 – Mental Health Diversion
 Alberta Justice and Solicitor General
 Alex – Youth Health Care
 Calgary Alpha House Society
 Calgary Attendance Centre
 Calgary Bridge Foundation
 Calgary Court Centre and Area
 Regional Courts
 Calgary Immigrant Education Society

Calgary Immigrant Women's Association
 Calgary John Howard Society
 Calgary Legal Guidance
 Calgary Public Library
 Calgary Remand Centre
 Calgary Women's Emergency Shelter
 Canadian Association of
 Elizabeth Fry Societies
 Centre for Newcomers
 Chinook Learning Services
 Correctional Services Canada
 – Calgary Parole
 Immigrant Services Calgary

Lethbridge Correctional Centre
 Legal Aid Alberta
 Native Counseling Services
 Okimaw Ochi Healing Lodge
 Regional Court Victim
 Assistance Teams
 Rowan House
 SORCe
 Stoney Tsuu T'ina Correctional Services
 Welcome Centre for New Immigrants
 Women's Centre of Calgary
 Youth Criminal Defence Office Funders
 YWCA

WE VALUE OUR
COLLABORATIVE
RELATIONSHIPS AND
 THE **OPPORTUNITY**
TO CONTRIBUTE TO
 VARIOUS COMMITTEES, AS
 EVERYONE BENEFITS WHEN
 ORGANIZATIONS **WORK**
TOGETHER AND SHARE
 EXPERTISE TO BETTER
 SERVE OUR MARGINALIZED
 AND VULNERABLE
 POPULATION.

PRACTICUM STUDENTS 2016

UNIVERSITY OF CALGARY

Darryl Janzen	Social Work
Sharon Brown	Social Work
Sophie Trabilsie	Social Work
Breanne Borowski	Community Rehabilitation and Disability Studies

MOUNT ROYAL

Sarah Galbraith	Social Work
Marleen Dorrestijn	Social Work
Shayla Thistle	Social Work



BOW VALLEY

Samantha Perry	Addictions Counselling
----------------	------------------------

LETHBRIDGE COLLEGE

Spencer Mpofu	Criminal Justice
Kassandra Haas-Ostrowski	Criminal Justice

CIWA

Tania Kamran	Office Administration Program for Immigrant Women
--------------	---

LOOKING FORWARD

2017 Priorities

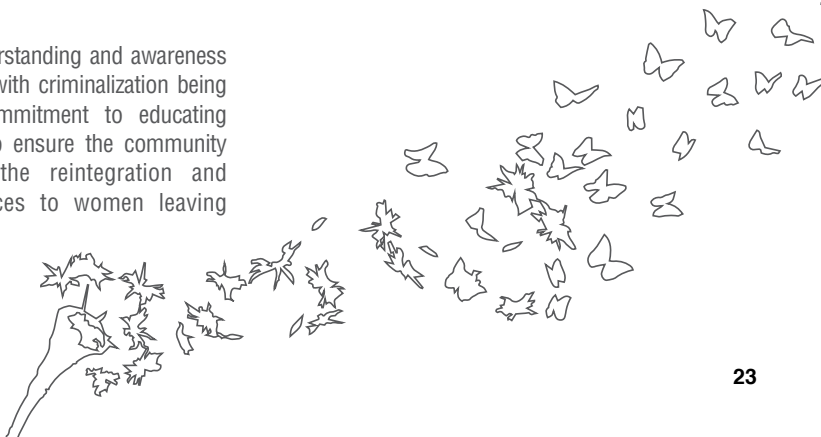
In 2017, EFry continues to focus on increasing the quality of our services to empower women, youth and their families by building upon their personal strengths to sustain their successes. We continue with the expansion our Indigenous initiatives and building our collaborations within the community.

We will review all structures to ensure the quality of our work continues to meet the needs of the women, their families, youth and court populations we serve. We strive to build collaborative networks to reduce duplication of services, enhance our resources and increase successes in the lives of our clients.

Healing and wellness are vital to ensuring we continuously support the growth and self-efficacy of our clients. This can only be accomplished by empowering women and youth to use their personal strengths to build confidence in their ability to become successful through their own commitment to healing.

In 2016, we gained understanding and awareness around women's issues with criminalization being a main focus. Our commitment to educating the public is essential to ensure the community of Calgary supports the reintegration and provides second chances to women leaving correctional institutions.

2017 WILL FOCUS ON OUR
COLLECTIVE IMPACT AND HOW
WE, AS A SMALL GRASSROOTS
AGENCY, CAN MAKE A LARGE
CHANGE IN HOW SOCIAL ISSUES
ARE ADDRESSED AND SUPPORTED
IN CALGARY.





FOR MORE INFORMATION OR TO HELP
THE WOMEN AND YOUTH WE SERVE,
CONNECT WITH US.

1731 – 10 Avenue SW Calgary, Alberta T3C 0K1

Across the street from the Sunalta LRT station

EMAIL reception@elizabethfrycalgary.ca
TELEPHONE (403) 294-0737
TOLL FREE 1 (877) 398-3656
FAX (403) 262-0285

www.elizabethfrycalgary.ca

f EFryCalgary **t** @EFryYYC

in Elizabeth Fry Society of Calgary